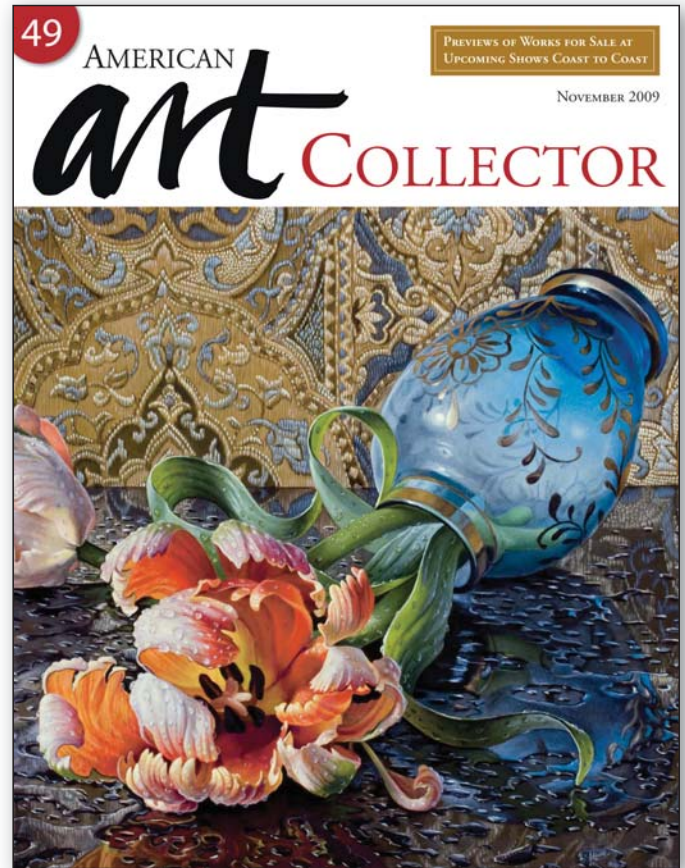


As seen in the  
November 2009 issue of

 AMERICAN  
**art** COLLECTOR



## UPCOMING SHOW

*Up to 35 works on show*  
October 8-November 30, 2009  
Quidley & Company  
118 Newbury Street  
Boston, MA 02116  
(617) 450-4300

• SHOW LOCATION BOSTON, MA

# DONALD JURNERY

## Poetry of the commonplace

**W**ith his feet firmly planted in the great landscape history starting with 17<sup>th</sup>-century Dutch painting and continuing through the great American landscape painters of the Hudson River School, Donald Journey creates contemporary paintings in the vein of these great Old Masters.

“Capturing the effect of light on the landscape has always been my primary goal, and this continues through this body of work,” says Journey. “The work ranges from paintings that vibrate with brilliant sunlight to the subdued mood of a summer fog—or a rising moon, or the glorious light of a late afternoon.”

Journey’s recent paintings seem to be connected to his love of coastal scenes.

“I’m fascinated by those places where the land meets the sea—engendered by a move to a coastal city north of Boston,” says Journey. “The subjects encompass England, France and the United States for this new exhibition.”

Journey often finds that collectors are able to make personal connections with these paintings. For him, that is the ultimate compliment.

“In one case, a distinguished New York patent attorney, who was chairman on the art committee for his firm, bought a very large painting of a secluded stream for their offices,” says Journey. “He subsequently called to tell me that he found, when he was confronted during the day with a particularly knotty problem, it was best if he left his desk to go sit for a bit with the painting. He remarked that he was often saying ‘I’m going fishing for a while.’”

Journey’s work is meant to appreciate the subtle beauties of the land around us and to make viewers take a break from their daily routines and appreciate these as well. It has been said that his paintings are a “summons to celebrate the poetry of the commonplace.” •



A SUMMER AFTERNOON NEAR CHAROLLES, OIL ON CANVAS, 30 X 60"



SUMMER FOG, OIL ON CANVAS, 24 X 30"

For a direct link to the  
exhibiting gallery go to 

[www.americanartcollector.com](http://www.americanartcollector.com)



A BERKSHIRE FARM, OIL ON CANVAS, 28 X 42"



NEW ENGLAND LITTORAL, OIL ON CANVAS, 36 X 72"